

## 10 ARCHAEOLOGY AND CULTURAL HERITAGE

---

### 10.1 INTRODUCTION

This chapter of the Environmental Impact Assessment Report (EIAR) has been prepared to assess the potential significant effects on the cultural, archaeological and architectural heritage resource, which may have occurred, are occurring or can reasonably be expected to occur because of quarrying and restoration carried out by the applicant in the townland of Hempstown Commons, Co. Kildare.

#### 10.1.1 SCOPE OF ASSESSMENT

The scope of this assessment comprises a study of the known heritage assets within the quarry and a 500m study area surrounding the quarry (see Figure 10.1). The impact assessment considers direct impacts of the quarry upon heritage assets, and also considers cumulative and combined effects. Informed by the results of the impact assessment, an appropriate and proportionate mitigation strategy has been developed, with residual effects subsequently assessed.

For the purposes of the assessment, heritage assets include physical features either created by, or that have undergone modification from, human activity, and placenames, historical events, language, memories and other intangible cultural considerations. For the purposes of this study the various types of heritage asset are divided into archaeological heritage, architectural heritage, and cultural heritage, encompassing objects of beauty, cultural, historic, scientific, social or spiritual value.

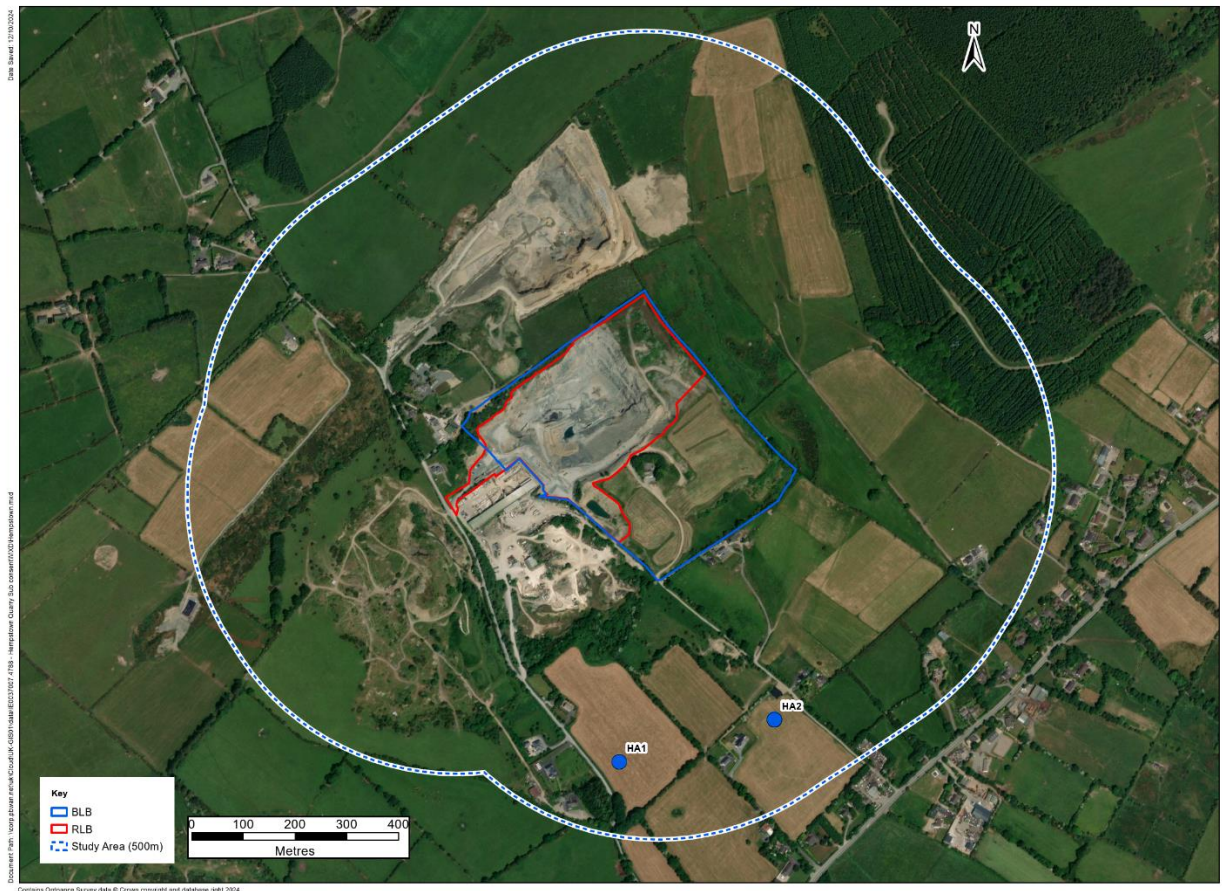
##### 10.1.1.1 Site Location and Study Area

The quarry is located in the townland of Hempstown Commons, Co. Kildare, approximately 4 km northeast of Blessington, and approximately 350 m northwest of the N81 Dublin Road.

The study area of 500m from the quarry (see Figure 10.1) was chosen to capture sufficient baseline data to robustly assess direct impacts from changes within the setting of known heritage assets. It also establishes the local archaeological and historical context, providing an understanding of the historical development of the quarry and the surrounding landscape.

##### 10.1.1.2 Technical Competence

The assessment was prepared by Dr. Vidhu Gandhi who has twenty years of cultural heritage assessment experience. She holds a BArch degree, a Masters degree in Sustainable Development and a Ph.D. specialising in cultural heritage and planning.



**Figure 10-1 Site with study area and heritage assets identified**

## 10.1.2 PROJECT DESCRIPTION SUMMARY

A full description of the proposed development is provided in Chapter 2 (Project Description) of this EIAR. A high-level summary of the proposed development is provided below.

The proposed development for further extraction of rock is to be within the existing void area with lateral extension of the void proposed in a north-easterly direction. The estimated total quantity of aggregate resource to be extracted in the life-of-quarry is ca. 1,757,500 tonnes. A proposed 12 year life-of-quarry requirement is based on an average production rate of ca. 2,929 tonnes per week for rock. Dry processing of mechanically broken and blast rock onsite will comprise crushing and screening to produce aggregate materials for market.

SQL proposed to relocate the existing office container, wheel wash and water recycling tank, weighbridge to fully within the Application Site to provide space for realignment of the private access lane on SQL lands and to develop dedicated carparking facilities for the quarry operation on SQL owned lands.

The proposed car parking facilities will provide parking for HGVs and private vehicles, including guest parking.

SQL propose to decommission the existing abstraction borehole located off the access road to facilitate the road realignment on their own lands. SQL propose to undertake periodic extraction of groundwater from an abstraction borehole located on Stresslite Precast Ltd to provide water for SQL's closed-loop system wheelwash recycling tank and the mobile bowser.

There will be no direct discharge to surface or groundwater from the quarry operations. Collected waters from the base of the quarry void will continue to be pumped to the primary soakaway (which is connected to an overflow soakaway). It is proposed that the collect waters will pass through a bypass separator prior to discharge to the primary soakaway. It is proposed to extend the existing sump on the quarry floor to provide additional temporary holding capacity for collected waters, if required.

Following end-of-quarry life, a 2 year restoration period is proposed. This is detailed in a Restoration and Habitats Management Plan provided in Appendix 2B of Chapter 2 (Project Description) of this EIAR.

## **10.2 LEGISLATIVE AND POLICY CONTEXT**

### **10.2.1 LEGISLATION**

The following national legislation and regulations are in place for the protection and recording of cultural heritage:

- Planning and Development Act 2000;
- National Monuments Act, 1930–2004;
- Historic and Archaeological Heritage and Miscellaneous Provisions Act 2023;
- The Architectural Heritage and Historic Properties Act, 1999;
- Heritage Act 1995;
- National Cultural Institutions Act 1997;
- National Monuments (Exhibition of Record of Monuments) Regulations 1994;
- The Kildare County Development Plan 2023–29; and
- The Wicklow County Development Plan 2022–28.

### **10.2.2 RELEVANT POLICIES AND PLANS**

The County Kildare Development Plan 2023–2029 (CDP) is the statutory plan detailing the development objectives/policies of the local authority. The plan includes objectives and policies, relevant to this assessment, i.e., with regard to cultural heritage.

The Council's aim is to protect, conserve and manage the archaeological and architectural heritage of the county and to encourage sensitive sustainable development so as to ensure its survival and maintenance for future generations.

#### **10.2.2.1 Cultural Heritage**

Chapter 11 of the 2023–2029 Kildare County Development Plan sets out the policies on cultural heritage within the county. The Council recognises the importance of identifying, valuing and safeguarding the archaeological and architectural heritage of Kildare.

The following policies are relevant to the assessment:

## Archaeology Resource

The following policy, objectives and actions are set out in Section 11.10 of the KCDP 2023–2029:

**Policy AH P2** Protect and enhance archaeological sites, monuments and where appropriate and following detailed assessment, their setting, including those that are listed in the Record of Monuments and Places (RMP) or newly discovered archaeological sites and/or subsurface and underwater archaeological remains.

**Objective AH O2** Manage development in a manner that protects and conserves the archaeological heritage of County Kildare, avoids adverse impacts on sites, monuments, features or objects of significant historical or archaeological interest and secures the preservation in-situ or by record of all sites and features of historical and archaeological interest, including underwater cultural heritage. The Council will favour preservation in – situ in accordance with the recommendation of the Framework and Principles for the Protection of Archaeological Heritage (1999) and the Council will seek and have regard to the advice and recommendations of the Department of Housing, Local Government and Heritage.

**Objective AH O3** In co-operation with the National Monuments Service, Department of Housing, Local Government and Heritage require archaeological impact assessment, surveys, test excavation and/or monitoring and/or underwater archaeological impact assessments for planning applications in areas of archaeological importance and where a development proposal is likely to impact upon in-situ archaeological monuments, their setting and archaeological deposits, based on recommendations of a suitably qualified archaeologist and the Council will seek and have regard to the advice and recommendations of the Department of Housing, Local Government and Heritage.

**Objective AH O4** Ensure that development in the vicinity of a site of archaeological interest is not detrimental to the character of the archaeological site or its setting by reason of its location, scale, bulk or detailing and to ensure that such proposed developments are subject to an archaeological assessment prepared by a suitably qualified archaeologist. Such an assessment will seek to ensure that the development can be sited and designed in such a way as to avoid impacting on archaeological heritage that is of significant interest including previously unknown sites, features, objects and areas of underwater archaeological heritage.

**Objective AH O5** Require the preservation of the context, amenity, visual integrity and connection of the setting of archaeological monuments. As a general principle, views to and from archaeological monuments shall not be obscured by inappropriate development. Where appropriate, archaeological visual impact assessments will be required to demonstrate the continued preservation of an archaeological monument's siting and context.

**Objective AH O6** Secure the preservation in-situ or by record of:

- the archaeological monuments included in the Record of Monuments and Places as established under section 12 of the National Monuments (Amendment) Act, 1994
- any sites and features of historical and archaeological interest including underwater cultural heritage and protected wrecks.
- any subsurface archaeological features including those underwater, that may be discovered during the course of infrastructural/development works in the operational area of the Plan.



Preservation relates to archaeological sites or objects and their settings.

**Objective AH O9** Promote and support in partnership with the National Monuments Section of the Department of Housing, Local Government and Heritage (DHLGH), the concept of Archaeological Landscapes where areas contain several Recorded Monuments.

#### 10.2.2.2 Architectural Heritage

The following policy, objectives and actions are set out in Section 11.15 of the KCDP 2023–2029:

**Policy AH P6** Protect, conserve and manage the archaeological and architectural heritage of the county and to encourage sensitive sustainable development in order to ensure its survival, protection and maintenance for future generations.

**Objective AH O20** Conserve and protect buildings, structures and sites contained on the Record of Protected Structures of special architectural, historical, archaeological, artistic, cultural, scientific, social or technical interest.

**Objective AH O21** Protect the curtilage of protected structures or proposed protected structures and to refuse planning permission for inappropriate development that would adversely impact on the setting, curtilage, or attendant grounds of a protected structure, cause loss of or damage to the special character of the protected structure and/or any structures of architectural heritage value within its curtilage. Any proposed development within the curtilage and/or attendant grounds must demonstrate that it is part of an overall strategy for the future conservation of the entire built heritage complex and contributes positively to that aim.

**Objective AH O32** Ensure that new development will not adversely impact on the setting of a protected structure or obscure established views of its principal elevations.

**Objective AH O43** Ensure that national guidelines and the principles of conservation best practice are followed in assessing the significance of a Protected Structure and in considering the impact of proposed development on the character and special interest of the structure, its curtilage, demesne and setting.

**Objective AH O45** Support the implementation of the National Policy on Architecture, 'Places for People' prepared by the Department of Housing, Local Government and Heritage.

#### 10.2.3 RELEVANT GUIDANCE

The assessment has been produced in accordance with the following professional standards and guidance:

- ClfA 2020, Standard and Guidance for historic environment desk-based assessment;
- ClfA 2020, Standards and Guidance for commissioning work or providing consultancy advice on archaeology and the historic environment;
- Department of Arts, Heritage, Gaeltacht and the Islands, 1999, Framework and Principles for the Protection of the Archaeological Heritage; and
- Environmental Protection Agency (EPA) 2022, Guidelines on the information to be contained in Environmental Impact Assessment Reports.

## 10.3 ASSESSMENT METHODOLOGY AND SIGNIFICANCE CRITERIA

Cultural significance lies in the value of a heritage asset to this and future generations because of its heritage interest; this may be archaeological, architectural, cultural, artistic, historic, traditional, aesthetic, scientific or social. The determination of a heritage assets cultural significance, or value, is based on legal status and/or professional judgement.

Table 10.1 identifies factors which are appropriate to consider during the assessment of heritage assets, with the adoption of five ratings for value: very high, high, medium, low, and negligible

**Table 10-1 Criteria for assessing the value of heritage assets**

Value	Example
Very High	<ul style="list-style-type: none"> <li>World Heritage Sites (including nominated sites); and</li> <li>National Monuments of acknowledged international importance.</li> </ul>
High	<ul style="list-style-type: none"> <li>National Monuments that are in the ownership or guardianship of the State, or in the ownership of a local authority;</li> <li>Heritage assets that are listed within the Register of Monuments and Places (RMP) and are the subject of Preservation Orders;</li> <li>Heritage assets that are listed within the RMP and are deemed to be of national importance;</li> <li>Protected Structures;</li> <li>Architectural Conservation Areas containing nationally important buildings/structures;</li> <li>Historic Parks and Designed Landscapes within the NIAH Garden Survey deemed to be of national importance; and</li> <li>Walled towns.</li> </ul>
Medium	<ul style="list-style-type: none"> <li>Heritage assets that are listed within the RMP and are deemed to be of regional importance;</li> <li>Structures that are contained within the National Inventory of Architectural Heritage (NIAH) and are deemed to be of regional importance;</li> <li>Architectural Conservation Areas containing buildings that contribute significantly to its historic character;</li> <li>Historic Parks and Designed Landscapes within the NIAH Garden Survey deemed to be of regional importance; and</li> <li>Newly identified heritage assets that are deemed to be of regional importance.</li> </ul>
Low	<ul style="list-style-type: none"> <li>Heritage assets that are listed within the RMP that have been compromised by poor preservation and/or poor survival of contextual associations;</li> <li>Heritage assets that are listed within the Sites and Monuments Record (SMR) and are deemed to be of local importance;</li> <li>Structures that are contained within the NIAH and are deemed to be of local importance;</li> <li>Historic Parks and Designed Landscapes within the NIAH Garden Survey deemed to be of local importance; and</li> </ul>

Value	Example
	<ul style="list-style-type: none"> <li>Newly identified heritage assets that are deemed to be of local importance.</li> </ul>
Negligible	<ul style="list-style-type: none"> <li>Heritage assets (RMP, SMR or newly identified) with very little or no surviving archaeological interest;</li> <li>Artefact find spots (where the artefacts are no longer in situ and where their provenance is uncertain); and</li> <li>Poorly preserved examples of particular types of minor historic landscape features (e.g. quarries and gravel pits, agricultural features, etc).</li> </ul>

The criteria for assessing the magnitude of impact from the quarry on heritage assets is shown in Table 10.2.

**Table 10-2 Criteria for assessing the magnitude of impact on heritage assets**

Magnitude	Adverse	Beneficial
Major	<p>Loss of most or all key archaeological materials or key historic building elements such that the significance of the heritage asset is totally altered.</p> <p>Comprehensive changes to setting such as extreme visual effects, gross change of noise or change to sound quality, or fundamental changes to use or access.</p>	<p>Preservation of a heritage asset in situ where it would otherwise be completely or almost lost.</p> <p>Changes that appreciably enhance the cultural significance of a heritage asset and how it is understood, appreciated, and experienced.</p>
Moderate	<p>Changes to many key archaeological materials or key historic building elements, such that the significance of the heritage asset is clearly modified.</p> <p>Considerable changes to setting that affect the character of the heritage asset such as visual change to many key aspects or views, noticeable differences in noise or sound quality, or considerable changes to use or access.</p>	<p>Changes to important elements of a heritage asset's fabric or setting, resulting in its cultural significance being preserved (where this would otherwise be lost) or restored.</p> <p>Changes that improve the way in which the heritage asset is understood, appreciated, and experienced.</p>
Minor	Changes to key archaeological materials or key historic building elements, such that	Changes that result in elements of a heritage asset's fabric or setting detracting from

Magnitude	Adverse	Beneficial
	<p>the significance of the heritage asset is slightly altered.</p> <p>Slight changes to setting such as slight visual changes to few key aspects or views, limited changes to noise levels or sound quality, or slight changes to use or access.</p>	<p>its cultural significance being removed.</p> <p>Changes that result in a slight improvement in the way a heritage asset is understood, appreciated, and experienced.</p>
Negligible	<p>Changes to archaeological materials or historic buildings elements such that alterations to the significance of the heritage asset are very minor.</p> <p>Very minor changes to setting such as virtually unchanged visual effects, very slight changes in noise levels or sound quality, or very slight changes to use or access.</p>	<p>Very minor changes that result in elements of a heritage asset's fabric or setting detracting from its cultural significance being removed.</p> <p>Very minor changes that result in a slight improvement in the way a heritage asset is understood, appreciated, and experienced.</p>
No Change	Changes to fabric or setting that leave significance unchanged.	

The terms shown in the matrix below have been used to define the significance of the effects identified and apply to both beneficial and adverse effects.

For the purpose of this assessment, significance of effects of Moderate or greater are potentially significant in the context of the EIA Regulations and are highlighted in bold in Table 10.3.



**Table 10-3 Significance of Effect**

<b>Value</b>		<b>Magnitude of Impact</b>				
		Major	Moderate	Minor	Negligible	No Change
	Very High	<b>Very Large</b>	<b>Large or Very Large</b>	<b>Moderate or Large</b>	Slight	Neutral
	High	<b>Large or Very Large</b>	<b>Moderate or Large</b>	<b>Moderate or Slight</b>	Slight	Neutral
	Medium	<b>Moderate or Large</b>	<b>Moderate</b>	Slight	Neutral or Slight	Neutral
	Low	Slight or <b>Moderate</b>	Slight	Neutral or Slight	Neutral or Slight	Neutral
	Negligible	Slight	Neutral or Slight	Neutral or Slight	Neutral	Neutral

## 10.4 BASELINE CONDITIONS

### 10.4.1 INTRODUCTION

The archaeological, architectural, and cultural heritage assets that lie within the quarry and the 500m study area are detailed in Table 10.4 Inventory of Heritage Assets below and are shown in Figure 10.1. Each entry in the inventory has a heritage asset (HA) reference number which is used to identify it within the assessment and on Figure 10.1.

### 10.4.2 INFORMATION SOURCES

The area was examined using information from:

- The Kildare County Development Plan 2023-29;
- The Wicklow County Development Plan 2022-28;
- UNESCO World Heritage Sites, including the tentative list of candidate sites;
- National Monuments in State Care, a list available by the Department of Housing, Local Government and Heritage;
- Potential National Monuments in the ownership of a Local Authority, derived from religious sites in the Archaeological Survey Database (ASD);
- Sites subject to Preservation Orders, a list available from the Department of Housing, Local Government and Heritage;
- Walled towns, information derived from <https://irishwalledtownsnetwork.ie>;
- Register of Historic Monuments (RHM);
- Record of Monuments and Places (RMP);
- Sites and Monuments Record Zones of Notification from [www.archaeology.ie](http://www.archaeology.ie);
- Architectural Conservation Areas, information from the various County Development Plans;
- Protected Structures from relevant local authorities;

- National Inventory of Architectural Heritage (NIAH) from [www.buildingsofireland.ie](http://www.buildingsofireland.ie);
- Designed Landscapes and Historic Gardens from the NIAH Garden Survey;
- Database of Irish Excavation Reports from [www.excavations.ie](http://www.excavations.ie);
- Cartographic sources including 1st edition OS 6 Inch maps (1826–1841), 2nd edition OS 25-inch maps (1841–1952), and 3rd edition OS 6-inch maps (1916–1926);
- Aerial photographs; and
- Documentary sources.

### 10.4.3 CULTURAL HERITAGE BACKGROUND

#### 10.4.3.1 Geology

The underlying geological formations comprise a bedrock geology of Pollaphuca Formation which has formed between 299 to 251 million years ago and is described as consisting of coarse grey greywacke sandstones and grits and dark grey shales. This rock is useful as a building material and has been extensively quarried across this region. The superficial geology consists of a fine loamy drift with limestones overlying drift with siliceous stones. This type of drift material is relatively free draining and can provide a suitable location for early settlement.

The Proposed development is located within Slate Quarries (KE004) County Geological Site and this is discussed in section 5.4.5 in Chapter 5 of the EIAR. The Site Importance is stated as *‘The link between the name of the Townland, and the history of use of a natural earth resource is a strong reason for marking this area as a County Geological Site, and a good place to actually see the rocks well exposed’* (GSI 2005). GSI (2005) states that *‘the proposal to include these working quarries as a CGS in no way is intended to limit the operations’*.

It is noted that the quarry assessed herein is not located within Slate Quarries townland, with that townland located south of Blessington. Furthermore, the quarry assessed herein is on lands privately owned by SQL and, due to wider local topography, bedrock exposures are largely not visible from the surrounding roads/walking routes. Although a view of the upper section of the north face of the quarry is visible from the local road when viewed across the third-party Stresslite Precast site.

#### 10.4.3.2 Walkover Survey

A field inspection of the quarry was conducted on 26 August 2020 and 8 January 2024. Due to the previous quarrying activity, there were no heritage assets visible within the development boundary and there is no potential for archaeological remains to be present.

#### 10.4.3.3 Previous Assessments

The existing quarry and part of the current application area was the subject of an EIA carried out by Golder Associates in 2019 that included an assessment of archaeology, architecture and cultural heritage. The assessment identified no sites of archaeological significance associated with the lands under consideration.

#### 10.4.3.4 Archaeological Investigations

Examination of the excavations i.e. database of Irish excavation reports indicated that there have been two licensed and one unrecorded archaeological investigations carried out in the study area. No heritage assets or features of archaeological significance were identified.

#### 10.4.3.5 Baseline Summary and Inventory of Heritage Assets

There are no known heritage assets within the quarry extents. There are two heritage assets within the 500m study area (see Table 10.4 for details), comprising two Cists, one of which was inscribed by Rock Art.

**Table 10-4 Inventory of Heritage Assets**

HA No.	Ref No.	Townland	Designation	Description
HA1	KD020-016	Hempstown Commons	Recorded Monument	Cist: In 1937, the discovery of a cist in a sand pit in Hempstown Commons was reported but upon investigation it was found that it had been opened sometime previously and its contents were much disturbed. The rectangular cist (dims. L 1.06m NE-SW; Wth 0.44m; D 0.61m) had three sides formed by single slabs set on edge and the fourth was of dry stone walling covered by a flat slab. It was covered by a large subrectangular capstone (L 1.34m; Wth 1.02m) and contained the fragmentary remains of the crouched skeleton of an adult female lying on her right side and possibly accompanied by a ceramic vessel and small pieces of chert and 'ochreous pebbles'. (Cahill and Sikora 2011, Vol 1, 221-23) A second cist (KD020-015001-) lies c. 300m to the ENE.
HA2	KD020-015001 and KD020-015002	Hempstown Commons	Recorded Monument	Cist: In 1949, an irregularly oval-shaped cist (dims. L 1m NE-SW; Wth 0.8m) was accidentally uncovered during the bulldozing of topsoil from the highest point of a low drumlin to expose gravel deposits. The cist lay 0.7-0.8m below the ground surface and was formed by a drystone wall two courses in height (H 0.4-0.5m), a floor paved with thin flags bedded in a thin film of clay resting on the gravel, and was roofed by two slabs, one of which was decorated on its underside (KD020-015002-). It contained the crouched inhumation of a male about 5' 6" in

HA No.	Ref No.	Townland	Designation	Description
				<p>height and aged 30 to 40 years. (Hartnett 1950, 193-8; Waddell 1970, 120) A second cist (KD020-016---) lies c. 300m to the WSW.</p> <p>One of the slabs was decorated on its underside. It is a sandstone slab, roughly triangular in shape with one end coming to a point (dims. L 1m; max Wth 0.7m; T 0.2m). One surface carried a pecked decorative pattern of several scattered motifs, including a penannular or horseshoe-shaped pecked area, small pecked cupmarks, a pair of conjoined pecked circles, irregular patches of pecking, and a pecked lozenge-shaped area with an incised outline. (Hartnett 1950, 193-8; Waddell 1970, 120).</p>

#### 10.4.3.6 Baseline Discussion

The following is a brief summation of the archaeological and historical development of the study area and the main types of heritage assets that are known from the surrounding landscape. It is intended to place the types of sites and monuments in the study area in context. The EIA study area is situated in the Barony of Naas North and the parish of Rathmore.

##### Prehistoric Period

The study area and the wider landscape appear to have been used for burials during prehistory. There are two Bronze Age burials known from the wider area in Dillonsdown (RMP WI005-001----) and Athgarrett (RMP KD025-007----) townlands that indicate prehistoric activity in the Bronze Age. There is also a ring-barrow (prehistoric burial monument) in Newtownpark (RMP KD025-008----) and a mound in Caureen townland (RMP KD020-014----) that may also be the remains of a prehistoric burial monument.

In the later Iron Age, there are two cists (HA1 and HA2) within the study area, one of which contained an incised stone. The abundance of funerary activity in the area suggests it was part of a ritual landscape rather than a settlement location during this period.

### Early Medieval Period

In the Early Medieval period (500 AD-1170 AD) the study area formed part of the Kingdom of Leinster which was ruled by 68 Kings from various inter-related families from the fifth century AD, commencing with Bressal Belach (died c.436 AD) and ceasing with Diarmait Mac Murchade who died in 1171. Classically settlement in the early medieval period is indicated by the presence of enclosed farmsteads known as ringforts. There are ringforts known in Wolfestown (RMP KD025-001----) and Deerpark (RMP WI005-012----) townlands and enclosures in Wolfestown (RMP KD020-013----), Athgarrett (RMP KD025-006----), Newtownpark (RMP KD025-014----), Deerpark (RMP WI005-011----) and Newpaddocks (RMP WI005-023----) townlands, that may be the remains of ringforts, indicating extensive early medieval settlement in the study area.

### Medieval Period

Diarmaid Mac Murchadha, King of Leinster, Killed the King of Ui-Faelain in 1141 and relations between Ui-Faelain and Murchadha were uneasy throughout the period. In 1166 the Ui-Faelain supported the High-King Ruaidhri OConchobhair's invasion of Ui Cheinnselaig and forced Murchadha to flee to Britain later in the year. He returned the following year aided by Norman mercenaries and retook Ui Cheinnselaig and the town of Wexford. In 1169 he invaded Ossory and overran the Ui-Faelain lordship. On the death of Diarmaid Mac Murchadha in 1171 his son-in-law Richard fitz Gilbert de Clare claimed the Lordship of Leinster and this was confirmed to him by King Henry II the same year. By the time of his death in 1176, when Leinster passed to King Henry II, the process of sub-infeudation (the granting of lands by lords to their dependents, to be held by feudal tenure) was well under way in much of Leinster. The Ui Faeláin lands in the study area were granted to Maurice FitzGerald who established the manor of Rathmore with its caput and motte and bailey castle to the north of the study area (Otway Ruthven 1980, 43, MacCotter 2008, 174-177). The study area may have formed part of this estate during this period or may have been agricultural or wild land outside the estate. No heritage assets from this period are located within the quarry or the study area. In 1185 John, Lord of Ireland, confirmed the grant of the manor of Rathmore to Maurice FitzGerald (MacNiochail 1964, 14). In 1293 Rathmore passed to John FitzThomas who subsequently became the Earl of Kildare (MacNiochail 1964, 67). The Earl's of Kildare held Rathmore until the rebellion of Silken Thomas in 1534.

### Post-medieval Period

Following the Kildare rebellion of 1534, the FitzGerald lands were confiscated by the Royal Government and in 1541 King Henry VIII leased Rathmore, and the other possessions of the Earl of Kildare to Walter Trott (Tudor Fiants Henry VIII No. 184). The lands changed hands numerous times throughout this period. The development location was always on the fringes of the estate and would have been used for agricultural purposes. Cartographic evidence does not show any buildings within the quarry from the 19<sup>th</sup> century onwards.



## **10.5 SELECTION OF SENSITIVE RECEPTORS**

### **10.5.1 BUILDING ASSESSMENT**

#### **10.5.1.1 Designated Structures**

The Kildare County Development 2023-29 and Wicklow County Development Plan 2022-28 were examined as part of the baseline study for this chapter of the EIAR. The review established that there are no Protected Structures situated within the substitute consent application area or within the EIA study area.

#### **NATIONAL INVENTORY OF ARCHITECTURAL HERITAGE**

The National Inventory of Architectural Heritage (NIAH) which is maintained by the Dept. of Culture, Heritage and the Gaeltacht was examined as part of the baseline study for this chapter of the EIAR on the 5th of January 2024. The review established that there are no additional structures included in the NIAH situated within the substitute consent application area or the EIA study area.

### **10.5.2 MAP INSPECTION**

All structures marked on the 1910 edition of the six-inch Ordnance Survey mapping within 300m of the application area were checked for potential field assessment. There are no such structures located in this area (see Figure 10-1).

### **10.5.3 ARCHAEOLOGICAL ASSESSMENT**

#### **10.5.4 RECORDED MONUMENTS**

The RMP for Co. Kildare which was established under Section 12 of the National Monuments (Amendment) Act, 1994 was examined as part of the assessment (DAHGI 1997). Note that in accordance with the Historic and Archaeological Heritage and Miscellaneous Provisions Bill 2023 the RMP will be replaced by the Register of Monuments, but the RMP was still legally in force when this assessment was prepared. There are three Recorded Monuments within 500m of the application site:

##### **KD020-016---- Cist: Hempstown Commons**

The asset located approximately 400m to the south-east of the substitute consent application area but will not be directly or indirectly effected by the proposal.

##### **KD020-015001 and KD020-015002 --- Cist with Rock Art: HEMPSTOWN COMMONS**

The asset located approximately 420m to the south-east of the study area but will not be directly or indirectly effected by the proposal.

## **10.6 POTENTIAL EFFECTS**

There are no known heritage assets within the quarry that would have been impacted upon by the quarrying activity, therefore there are no direct physical impacts on heritage assets.

The heritage assets within the study area are located approximately 400 m to 450 m away from the edge of the quarry. There are limited direct views into the quarry and the rural setting of the heritage assets has been retained, with minor industrial activity from the quarry and adjacent works present in some views. The impacts from the quarry are assessed as No Change, resulting in a Neutral significance of effect on all three heritage assets.

### **Interaction with other Effects**

No interaction with other effects have been identified.

## **10.7 REMEDIAL MEASURES REQUIRED**

There have been no impacts on archaeological, architectural or cultural heritage and no mitigation is required.

## **10.8 RESIDUAL EFFECTS**

The residual effects are Neutral on the heritage assets within the study area.

## **10.9 CUMULATIVE EFFECTS**

The cumulative effects associated with other permitted / under construction third-party developments have been considered in Chapter 15 of this EIAR. The Proposed Development is considered to **not have any cumulative effects** on cultural heritage and archaeology.

## **10.10 DIFFICULTIES ENCOUNTERED**

No difficulties were encountered in the compilation of this assessment.

## **10.11 SUMMARY AND CONCLUSIONS**

This environmental impact assessment report is intended to assess the potential significant effects on any cultural, archaeological and architectural heritage assets, which may have occurred, are occurring or can reasonably be expected to occur because of the quarry, located in the townland of Hempstown Commons, Co. Kildare. There are no known archaeological, architectural or cultural heritage assets in the application site and the development has no impact on any known heritage assets within the surrounding area.

## **10.12 REFERENCES**

Byrne, F.J. 1973. Irish Kings and High Kings. Dublin.

Curtis, E. 1932-43. Calendar of Ormond Deeds 1172-1603. Dublin. VI Volumes.

DAHGI 1995. Recorded Monuments Protected under Section 12 of the National Monuments (Amendment) Act, 1994. County Wicklow.

DAHGI 1996. Recorded Monuments Protected under Section 12 of the National Monuments (Amendment) Act, 1994. County Kildare.

DAHGI 2002. Code of Practice between the Irish Concrete Federation & the Minister for Arts, Heritage, Gaeltacht and the Islands.

Eogan, G. 1965. Catalogue of Irish Bronze Swords. Dublin.

Eogan, G. 1983. Hoards of the Irish Later Bronze Age. Dublin.

- Eogan, G. 2000. The Socketed Bronze Axes in Ireland. *Prähistorische Bronzefunde*, abteilung IX, band 22.
- EPA 2002. Guidelines on the information to be contained in Environmental Impact Statements.
- EPA 2003. Advice Notes on Current Practice in the preparation of Environmental Impact Statements.
- GSI (2005) Slate Quarries Site Report in 'The Geological Heritage of Kildare'.
- Harbison, P. 1969. The axes of the Early Bronze Age in Ireland. *Prähistorische Bronzefunde*, abteilung IX, band 1.
- Heritage Council 1999. The role of the Heritage Council in the Planning Process. Kilkenny.
- Johnston, S.A. 1990. The Neolithic and Bronze Age activity at Dun Ailline, Co. Kildare, *Emania* 7, 26-31.
- Kavanagh, R.M. 1991. A reconsideration of razors in the Irish earlier Bronze Age. *Journal of the Royal Society of Antiquaries* 121, 77-104.
- Kildare County Council. County Development Plan 2023-29.
- MacCotter, P. *Medieval Ireland*. Dublin.
- MacNiocaill, G. 1980 *Crown Surveys 1540-41*. Dublin.
- Morrin, J. 1861. *Calendar of Patent and Close Rolls*, Vol I -II. London.
- O'Flaherty, R. 1995. "An analysis of Irish Early Bronze Hoards containing copper or bronze objects." *Journal of the Royal Society of Antiquaries* 125, 10-45.
- O'Riordain, B and Waddell J. 1993. *The Funerary Bowls and vases of the Irish Bronze Age*. Galway.
- Raftery, B. 1984. *La Tène in Ireland*. Marburg.
- Simpson, D.D.A. 1990. "The Stone Battle Axes of Ireland." *Journal of the Royal Society of Antiquaries* 120, 5-40.
- Simington, R. 1952. *Civil Survey of Co. Kildare 1654-5*. Dublin.
- Sweetman, D. 1999. *The Medieval Castles of Ireland*. Dublin.
- Trant, K. 2004. *The Blessington Estate 1667-1908*. Dublin.
- Waddell, J. 1990. *The Bronze Age burials of Ireland*. Galway
- Waddell, J. 1998. *The Prehistoric Archaeology of Ireland*. Galway.
- Wicklow County Council 2022. *County Development Plan 2022-28*